

# October 2006 DMA Fall Foliage Tour

**REMEMBER YOUR TWO-WAY RADIOS!!!!!!!!!! (Tune in to Channel 12)**

**Friday Night, October 27, 2006**

**Please show up with a FULL TANK OF FUEL.**

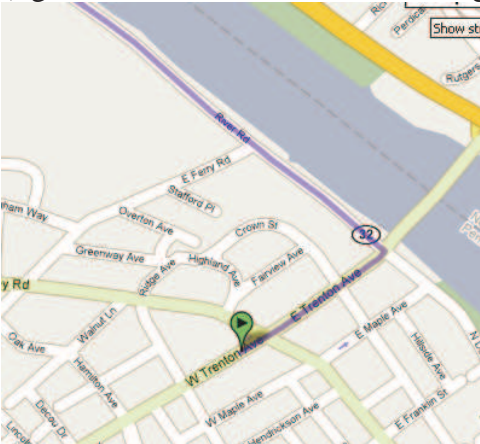
We will meet in the parking lot of a shopping center in Morrisville, PA on East Trenton Ave, one block from Route 32. There is a Garden Farm Market and Footwear Factory with big flags and a stone ramp into the parking lot.

**WE WILL BE LEAVING THE PARKING LOT AT 7:30 PM SHARP!**



**We meet in this parking lot. Look for the DeLoreans!**

When we are ready to leave, make a right out of the parking lot towards Trenton, NJ. Make a left onto Route 32 (right before the Calhoun Street Bridge).



Continue on Rt 32N, if there is still a detour follow signs for 32N. The drive takes about 25 minutes and you will drive past Washington Crossing National Park. From this site, General George Washington and men of the Continental Army and militia crossed the Delaware River on Christmas night 1776 and marched to Trenton, New Jersey. There they attacked and defeated Hessian troops quartered in and around the village. This surprise attack and victory set the stage for Washington's subsequent victories at the Second Battle of Trenton and Princeton. The Crossing and the Trenton/Princeton campaign have become known as the Ten Crucial Days, a campaign that saved Washington's army from defeat, allowing them to fight another day and achieve ultimate victory.

Continue through the town of New Hope, staying on Route 32 N through the light. Go to the stop sign and again, continue on the same road. Bear right across the bridge into the town of Stockton.



It takes about 30-35 minutes to get to the Stockton Inn.

**Saturday Morning, October 28, 2006**

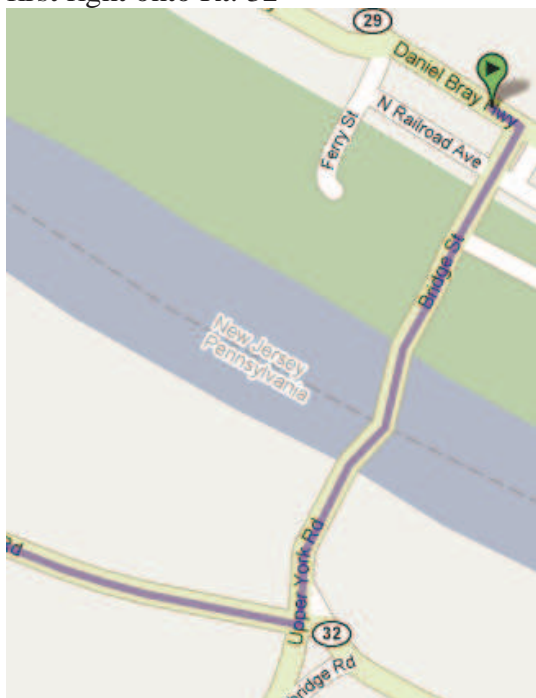
*DISCLAIMER: Due to the flooding this past year, many of the roads are closed. However, over the past few months, the roads have slowly been repaired, reopening them to traffic. We have included the detours in these instructions, however, if during the drive a road has opened up which was previously closed during the test runs, please bear with us as we keep you informed during the drive of any changes.*

***WE WILL BE LEAVING THE STOCKTON INN PARKING LOT AT 10 AM SHARP!***

***MAKE SURE YOU HAVE ENOUGH FUEL TO GO 100 MILES WITHOUT STOPPING!***

Reset your trip odometer. We will have tags of “OD” for at points along the trip.

OD 0: Exit Left On Route 29 out of the Stockton Inn Hope you enjoyed your stay!! Make an immediate right onto Bridge Street to go over the Bridge that crosses the Delaware River. When you get into PA, make your first right onto Rt. 32



OD 0.4: Continue on Route 32 – you will have a beautiful view of the Delaware River on the right. Continue straight on River Road.

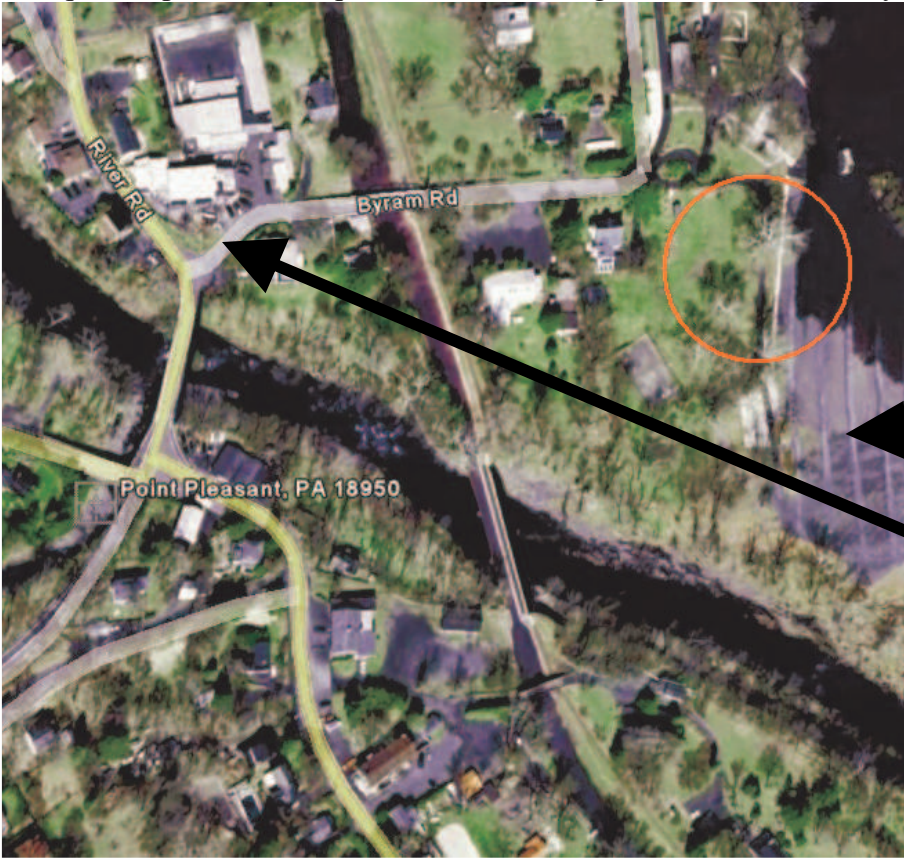
OD 3.5: **Stop and park** in the parking lot across from the Black Bass Hotel and enjoy the view of the Pennsylvania Canal by the walking bridge to Bulls Island.



**Parking area for Black Bass Hotel**

OD 3.5: Resuming the drive on River road, you'll see a bridge on your right after you enter the town of Point Pleasant. Make a sharp right over the bridge, still following Route 32N (River Road).

After the bridge make a sharp right onto Byram Road (At antique store). Go down Byram over the bridge into the parking lot of 'River Country'. This will be our second stop. Take your time, enjoy the view and the Antique Shops and other quaint stores (Trading Post of Bucks County, Poor Richards).



**Parking area for River Country**

**Antique Store at corner**

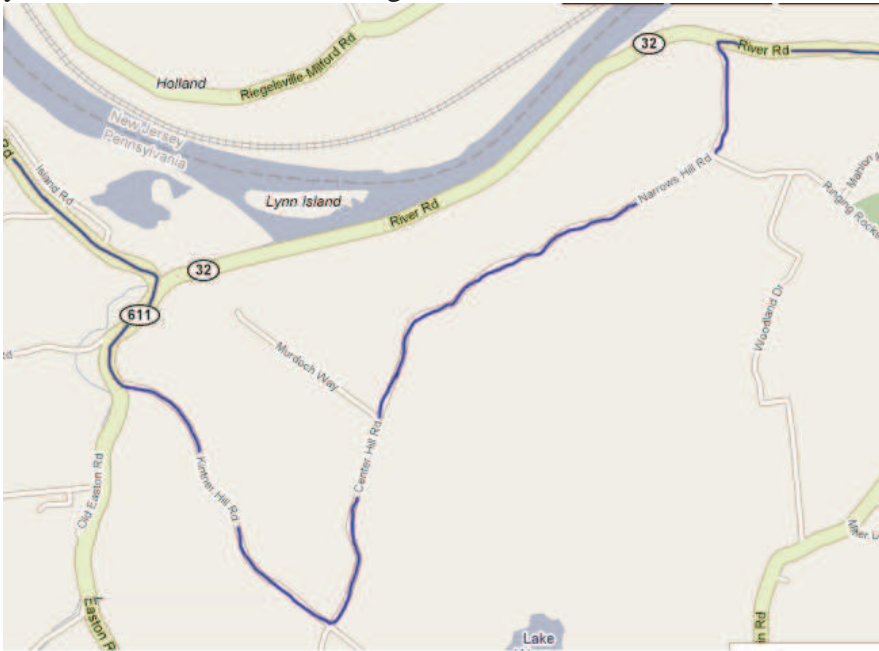
Exit River Country back over the bridge and make a right onto River Road (also Route 32N). 5 miles up River Road there will be a turn off in the road straight ahead to the newly renovated Sand Castle Winery (there is also a stop sign here).

Go left into the entrance of the Winery. We will stop here for a tour of the winery, a wine tasting, and a light fare. We encourage you to purchase their wines – they are delicious and they take pride in making sure their wines are of the utmost quality. They are known for their Riesling wines. Our personal favorite is their Alpine Spice a dessert wine that can be consumed hot or cold.

OD 0: Exit the Winery and turn left back onto 32N (River Road). **Reset your trip odometer to 0 when you make the left turn**

OD 8.1: turn left at the **detour** - this is 32N, towards 611 (also Narrows Hill Road). You will be going up a steep hill. At the top of the hill, make a right (following detour sign) onto Center Hill Road. At the stop sign, make a right on Kintner Hill Road

OD 11.8: At the end, make a right (you are on Kintnersville), bear left and stay on 611 North. In a few miles, you will enter the town of Riegelsville. You will remain on 611N for a while.



OD 21.5: Continue under a large underpass for Highway 78. Continue on 611N

OD 23.4: Make a right onto 611 North after going under a large overpass (near a McDonalds). Stay in the Right lane and make a right (there is an Exxon gas station there) and keep following the signs for 611 North. You will need to stay in the left lane to go through the traffic light coming up, then you will be making a right, following the signs for 611.



OD 23.9: Bear right at the stop sign and again continue on 611 North. Keep following 611, the road turns right at a light

OD 31.3: (Martin’s Creek Inn is on one corner and Valero Gas station on the other). 611 breaks off the right

OD 32.3: turn left to follow 611.

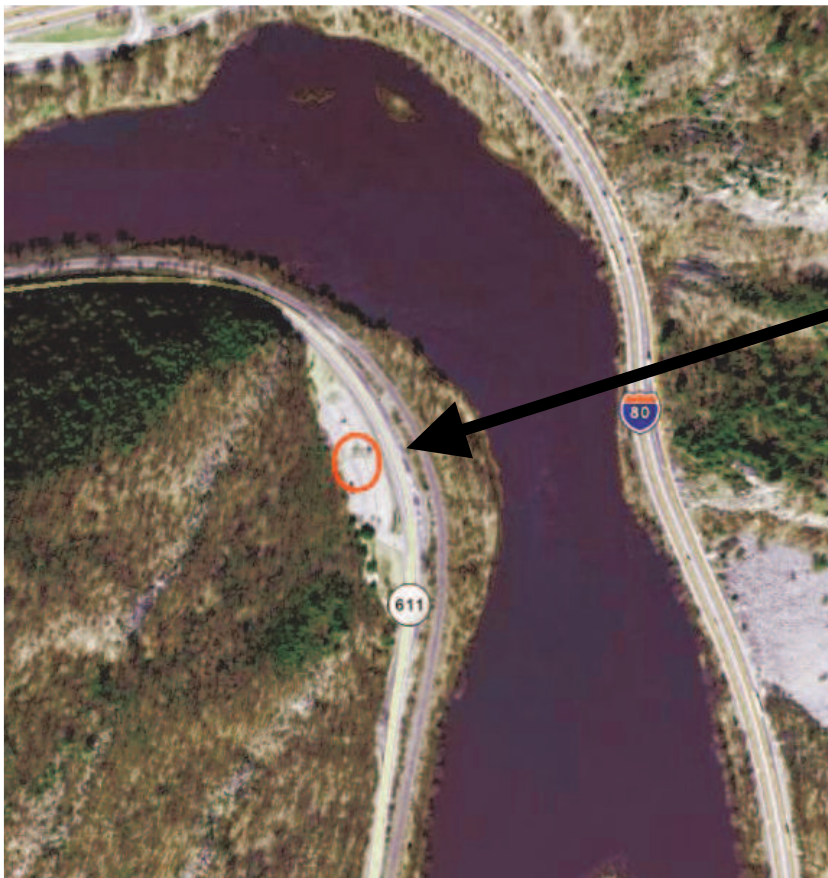


OD 37.9: there is a Reform Cemetery. 611 will then split off to the right (you will see Route 80 to your left).

OD 42.3: stay straight following 611, take 611 to the stop sign and make a left (toward the Delaware Water Gap), continuing on 611. There is a beautiful scenic view and we will stop.



OD 46.1: Left turn in to Point of Gap Overlook parking lot (we will pass the smaller scenic stop on the right first). The spot where we will stop also has a trail so you'll see signs for that as well.



**Pull in to  
overlook  
parking  
lot here**

Resume Drive:

Make left out of the parking lot, continuing north on 611. Drive through the Borough of the Delaware Water Gap. We will pass the restaurant which where we will be having dinner - The Sycamore Grille

OD 48.4: Continue past the restaurant and at the next light, make a right following the signs for Route 80 West



**Dinner is  
HERE!**  
(but, go to the  
hotel first)

OD 48.5: (there is a Doughboys Pizza Place on the corner). Stay straight to get onto 80W. Take 80W to Exit 309 towards Marshall Creek, Route 209N. (about 5 minutes from the restaurant). Once you get off exit, go straight through the first light and immediately get in the left lane.

OD 50.0: You will be making a left into the hotel right after that light. There is a lot of oncoming traffic so please be careful.

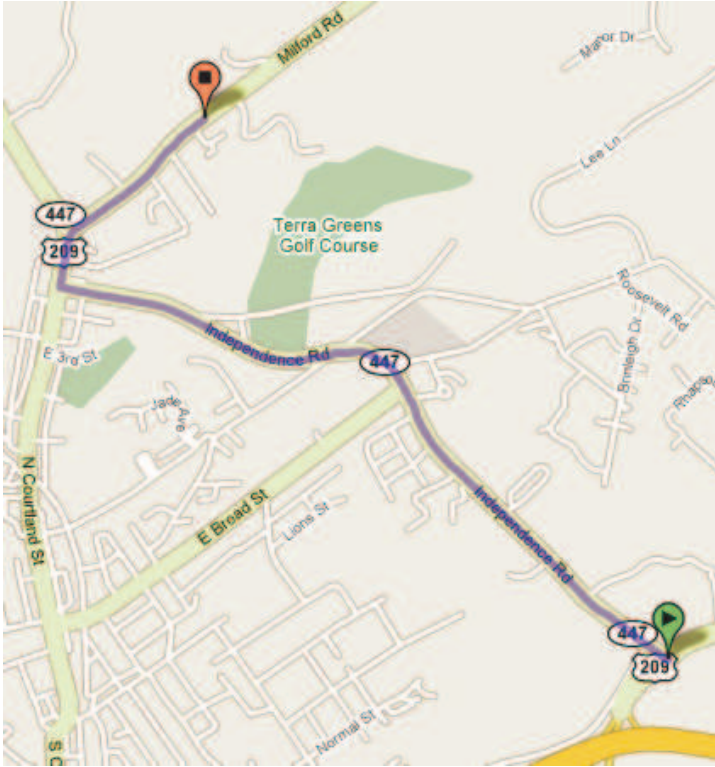
### **Hotel to Dinner Saturday night.:**

Take Route 80 East one exit –to Exit 310 towards 611/Delaware Water Gap. Make a slight right onto Broad Street. Make a left onto Main Street. The Sycamore Grill will be on your left hand side. There will be reserved parking for the Deloreans along the stone wall. Please try to back into the parking spots so we can take a nice picture for the club as well as for the restaurant.

## Sunday

### Hotel to Candle Factory:

Make a right turn out of the hotel on to 209S. Make a right at the first light on to Route 447. At end, make right, then another quick right and follow BUS 209N. The Pocono Candle Factory will be on your Left.

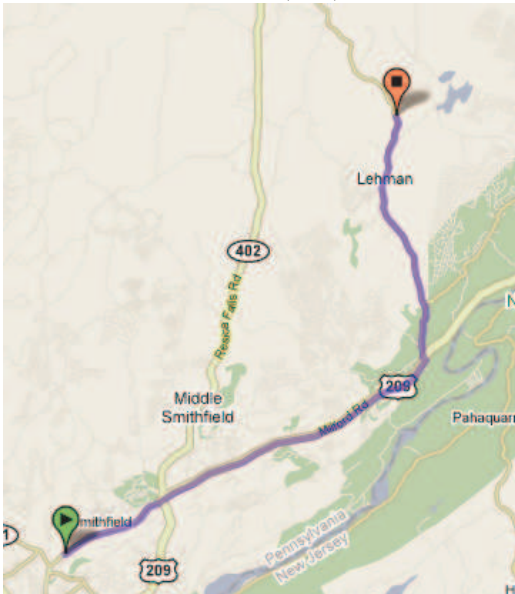


### Candle Factory to Outlet Mall

Back track to Route 80 West (past hotel). Take Interstate Route 80 West to Exit 299, the Tannersville Exit. At the bottom of the ramp make a right. Turn left at the first traffic light. The entrance to The Crossings is on your right.

### Candle Factory to Bushkill Falls

Exit on to Route 209 (bus) North. Follow 209N for 11 miles, turn left on to BushKill Falls Rd.



## Candle Factory to Crayola

Back track to Route 80 East (past hotel). Exit Rt 80 at Rt 611 South. Follow Route 611 South (reverse of Saturday drive). Once you reach the town of Easton, follow signs for the Crayola Factory/Store. There is a pay parking garage behind the factory on Pine Street.

