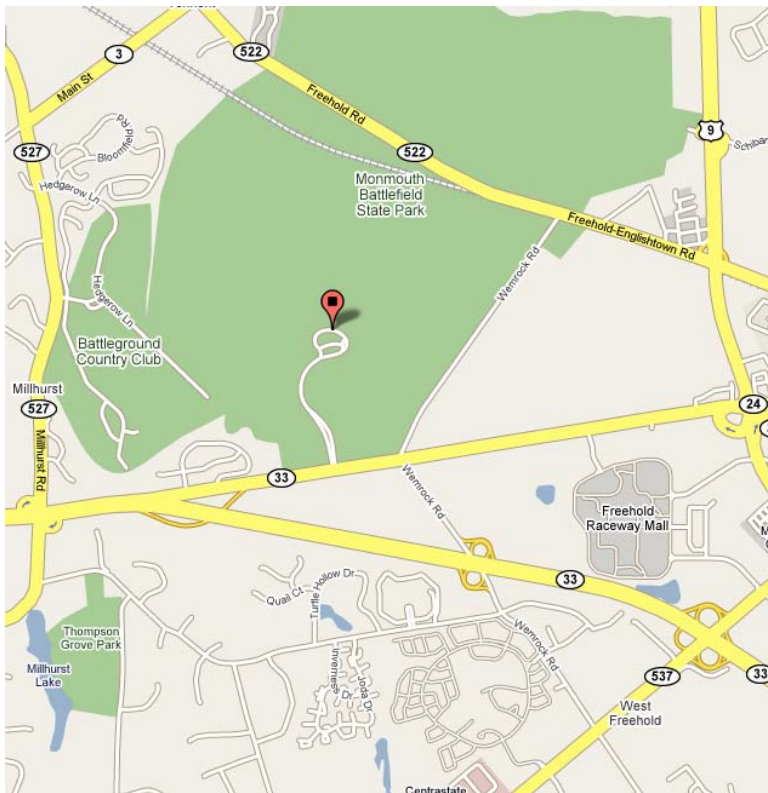


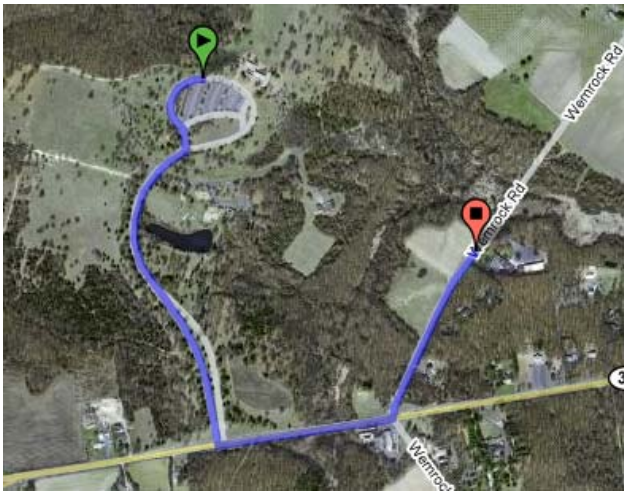


## Summer Fun Run 2007

We will be meeting at Monmouth Battlefield State Park. The entrance to the park is on State Route 33 BUSINESS, Freehold NJ. Please be in the parking lot of the main building (very end of road) no later than 9:30AM.



After the Battlefield tour, we will make a short drive to the BattleView orchards. You will make a LEFT out of the park on to RT 33 BUSINESS East. Then make a left at the first traffic light on to WEMROCK ROAD. Please find out which field we will be parking in and make a note of it here. (Sorry! We won't find out till that day!). Try your best to leave the orchard by 11:30 AM.



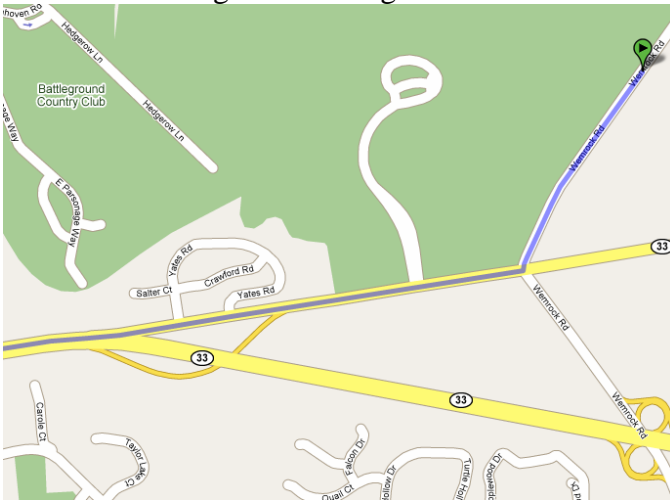
The Driving Tour: Our challenge was to take a boring 12 minute ride from the orchard to the picnic area and expand it in to a scenic tour around the soon to be destroyed New Jersey central farm lands.

We will start out traveling on Wemrock Road South, back towards Rt. 33 Business.

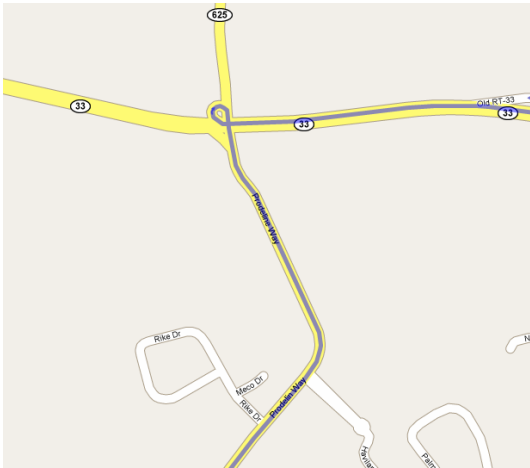
**When you get to Rt. 33B, please set your odometer to 0.0 to stay with the directions.**

Odometer Mileage - 0.0: Make a RIGHT on to Rt. 33B Westbound.

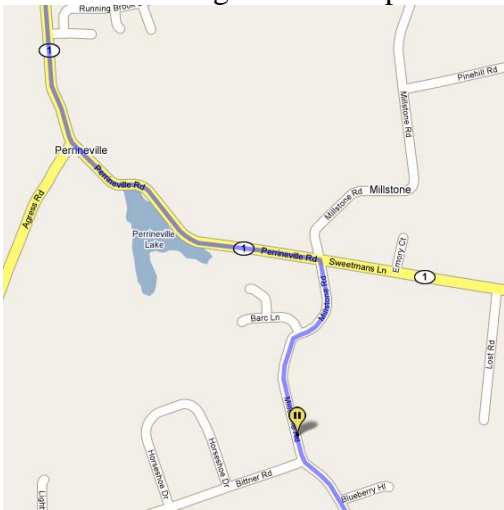
Odometer Mileage - 1.0: Merge on to Rt. 33 West



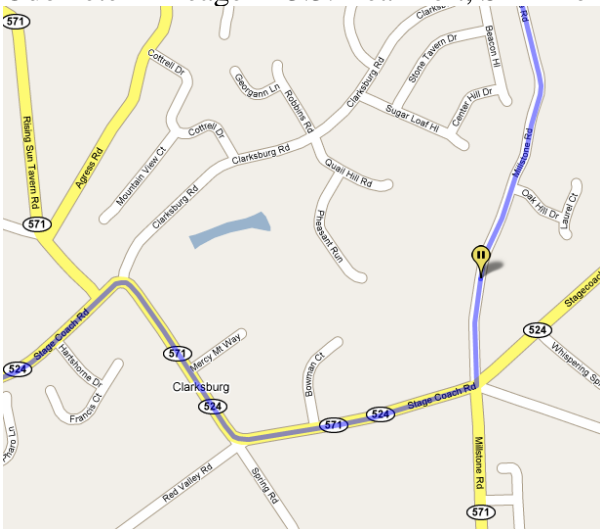
Odometer Mileage - 6.4 Take Jug handle on to PERRINEVILLE Rd South



Odometer Mileage - 9.8: Just past the lake, Turn RIGHT on to MILLSTONE ROAD.

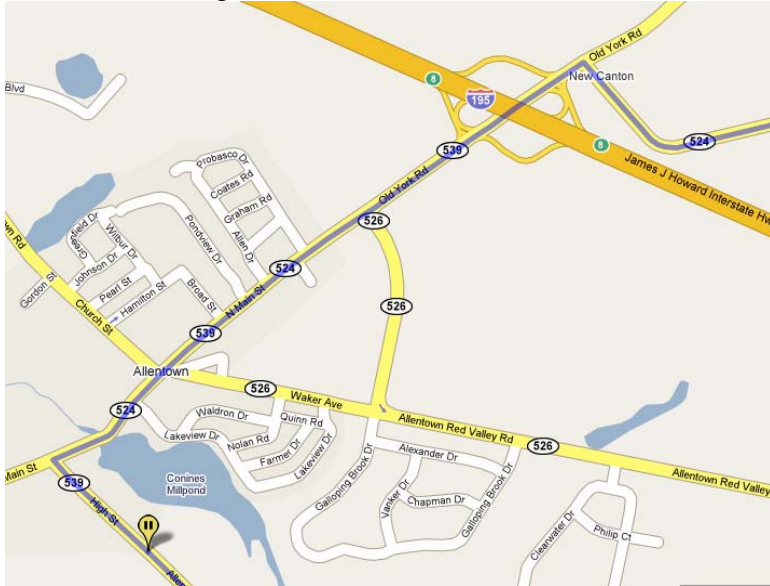


Odometer Mileage - 12.3: RIGHT on STAGECOACH ROAD  
 Odometer Mileage - 13.3: Bear Left, STAY on STAGE COACH ROAD

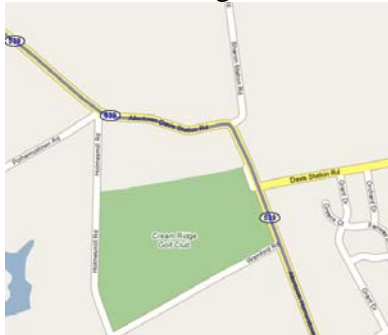


Odometer Mileage - 20.2: Turn LEFT on to MAIN STREET (Rt 524 West)  
 Odometer Mileage - 20.9: You are entering Allen Town, NJ. **SPEED LIMIT 25!!** Speeding tickets are a significant source of revenue in this town **WATCH YOUR SPEED!!**

Odometer Mileage - 21.6: Turn LEFT on to HIGH STREET (Rt 539)



Odometer Mileage - 24.9: Bear right on RT 539 South



Odometer Mileage - 30.5: LEFT on RT 528 East



Odometer Mileage - 38.1: LEFT on CEDAR SWAMP (RT 528/ RT 527 )



Odometer Mileage - 43.3: RIGHT on to ELY HARMONY

Odometer Mileage - 45.3: Left on NOMCO

Odometer Mileage - 47.4: LEFT on GEORGIA

Odometer Mileage - 47.5: LEFT in to Turkey Swamp Park – Follow signs to OAK POINT

